

# MMR MWR MMB MWB-1 Cast Iron Cement Retainer & Bridge Plug

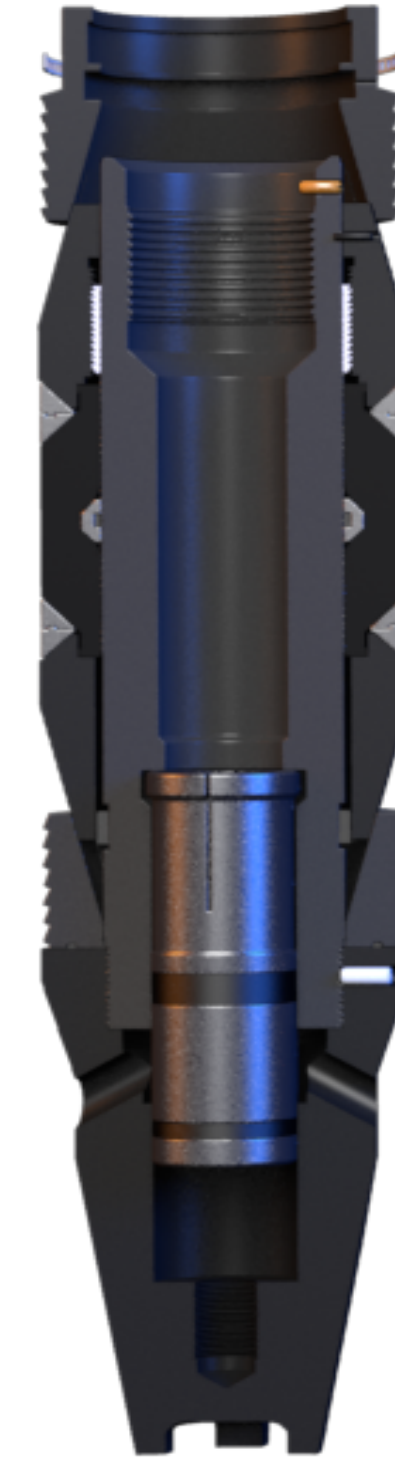


The Map Oil Tools Sleeve Valve Cement Retainer is a modular designed, drillable tool that can be easily converted for use in 4 applications.

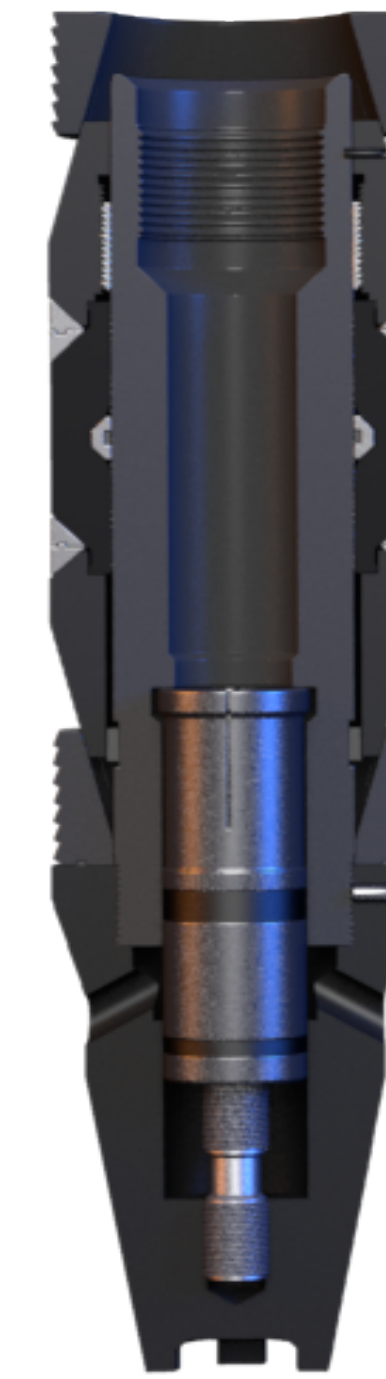
### FEATURES:

- Simple surface controlled valve
- Allows tubing pressure test before squeezing
- Valve automatically closes when the stinger is picked up, locking in the squeeze pressure
- Valve protects sensitive zones in low fluid wells
- Simple conversion to a bridge plug
- Mechanical or wireline set
- Easily drilled

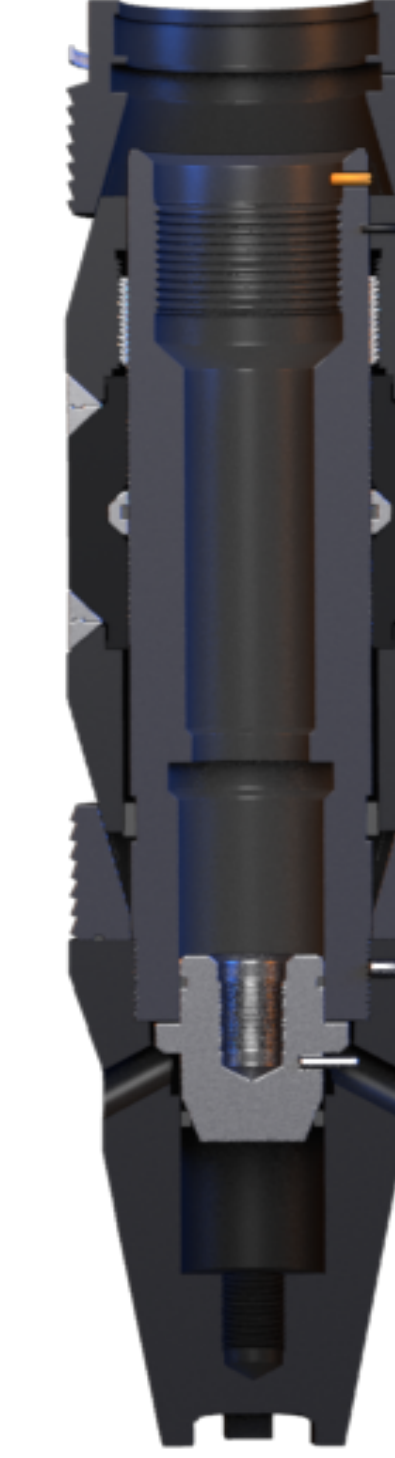
**MMR**  
Mechanical Set Cement Retainer



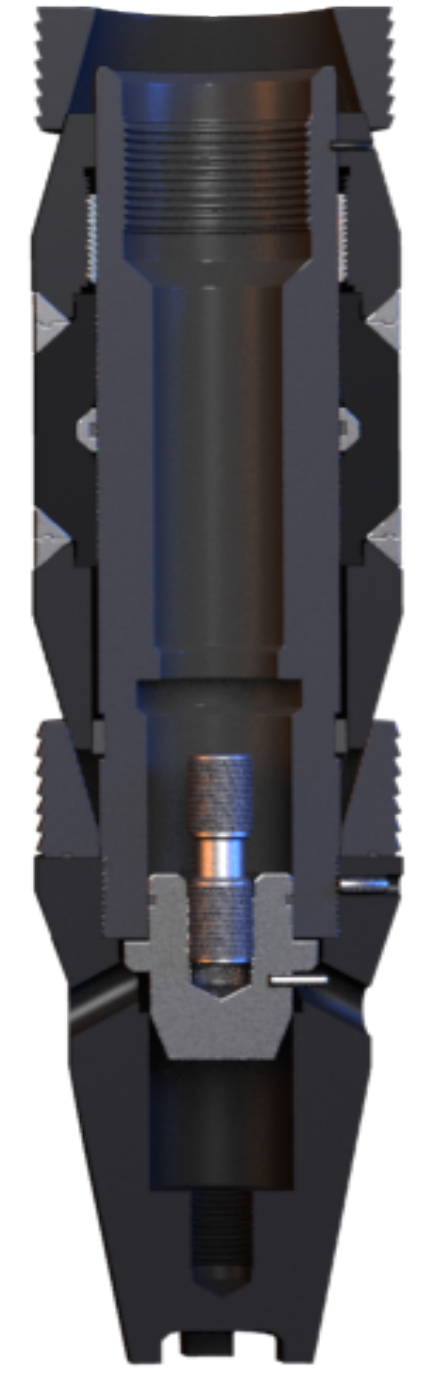
**MWR**  
Wireline Set Cement Retainer



**MMB**  
Mechanical Set Bridge Plug



**MWB-1**  
Wireline Set Bridge Plug



Configuration Availability Chart										Setting Equipment Compatibility Chart							
Casing		Setting Range		Tool OD (in.)	Wireline Set		Mechanical Set		Bridging Plug Conversion Kit	Wireline Feeler and Junk Catcher Gage Ring O.D. (in.)	Wireline Adapter Kit Use with MWR & MWB-1		Wireline Pressure Setting Assembly	MSS Stinger Seal Assembly	MTC Tubing Centralizer	MSR Mechanical Setting Tool	MSB Mechanical Setting Tool
OD (in.)	Wt (lbs/ft)	Min ID (in.)	Max ID (in.)		MWR Cement Retainer	MWB-1 Bridge Plug	MMR Cement Retainer	MMB Bridge Plug			Use with MWR & MMR	Baker Style Adapter					
4 1/2	9.5-15.1	3.826	4.090	3.59	0620359001	0620359007	0620359002	0620359009	0620359191	3.625	0660359001		10	2-3/8" (0620359010)	0620359011	0620359005	0620359004
5	11.5-20.8	4.156	4.560	3.93	0620393001	0620393010	0620393002	0620393009	0620431191	4.000	0660393001		20		0620431011	0620431005	0620431004
5 1/2	13.0-23.0	4.580	5.044	4.31	0620431001	0620431010	0620431002	0620431009	0620359191	4.343	0660431001				0620470011	0620470005	0620470004
5 3/4	14.0-26.0	4.890	5.290	4.70	0620470001	0620470007	0620470002	0620470009		4.731	0660470001				0620537011	0620537005	0620537004
6 5/8	17.0-32.0	5.595	6.135	5.37	0620537001	0620537007	0620537002	0620537009		5.406	0660537001				0620568011	0620568005	0620568004
7	17.0-35.0	6.004	6.538	5.68	0620568001	0620568007	0620568002	0620568009		5.718	0660568001				0620631011	0620631005	0620631004
7 5/8	20.0-39.0	6.625	7.125	6.31	0620631001	0620631007	0620631002	0620631009		6.406	0660631001				0620712011	0620712005	0620712004
8 5/8	24.0-49.0	7.511	8.097	7.12	0620712001	0620712007	0620712002	0620712009		7.156	0660712001			0620812011	0620812005	0620812004	
9 5/8	29.3-58.4	8.435	9.063	8.12	0620812001	0620812007	0620812002	0620812009		8.156	0660812001		0620943011	0620943005	0620943004		
10 3/4	32.75-60.7	9.660	10.192	9.43	0620943001	0620943007	0620943002	0620943009	0620568091	9.468	0660943001		0620994011	0620994005	0620994004		
11 3/4	60.0-83.0	10.192	10.772	9.94	0620994001	0620994007	0620994002	0620994009		9.968	0660994001		0621043011	0621043005	0621043004		
11 3/4	38.0-60.0	10.772	11.150	10.43	0621043001	0621043007	0621043002	0621043009		10.468	0661043001		0621188011	0621188005	0621188004		
13 3/8	48.0-80.7	12.175	12.715	11.88	0621188001	0621188007	0621188002	0621188009		12.031	0661188001		0621412011	0621412005	0621412004		
16	65.0-118.0	14.576	15.250	14.12	0621412001	0621412007	0621412002	0621412009		14.156	0661412001		0621837011	0621837005	0621837004		
20	94.0-133.0	18.730	19.124	18.37	0621837001	0621837007	0621837002	0621837009		18.406	0661837001						

Note: The following configurations are available upon request:  
 (1) High Temperature Premium Slips  
 (2) Carbide inserted slips for premium casing;  
 (3) Threaded guide shoe

888-627-8665  
 sales@mapoiltools.com